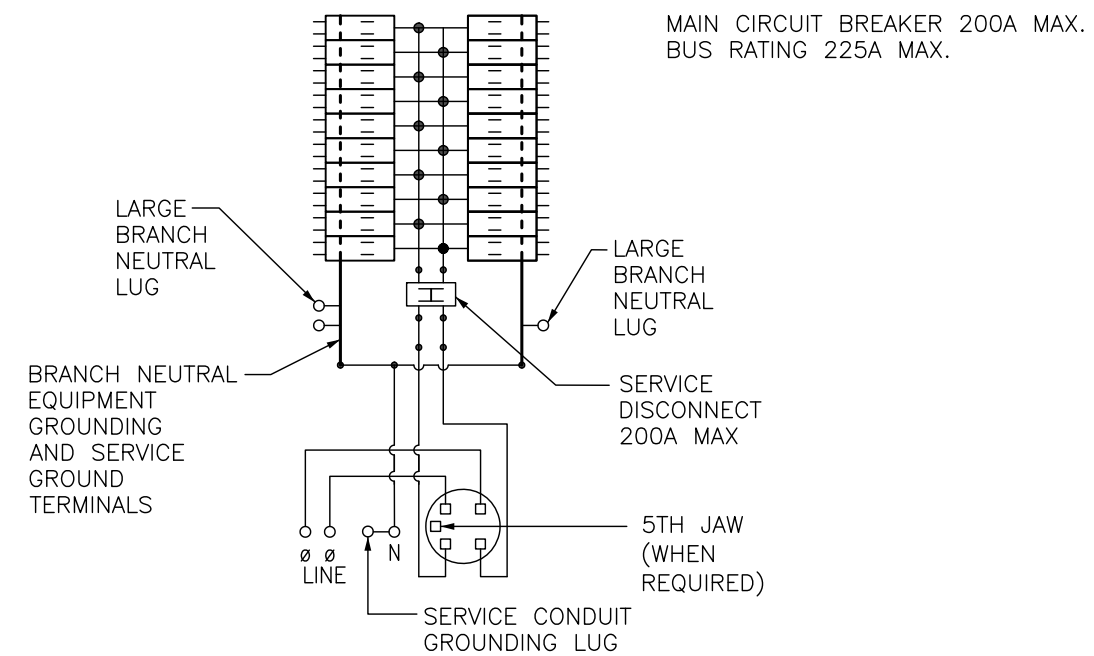
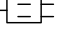


NOTES:
FINISH — GRAY BAKED ENAMEL
POWER COAT PAINT OVER CLEANED
GALVANNEALED STEEL.
MAXIMUM SYSTEM VOLTAGE: 120/240VAC, 1Ø3W
UL LISTED — FILE E-6294.
MEETS EUSERC SPECIFICATIONS.
SUITABLE FOR UNDERGROUND/OVERHEAD SERVICE.
* ORDER TUNNEL KIT SEPERATELY (SCTKP20) FOR OH SERVICE.
IF THE OVERHEAD TUNNEL KIT IS INSTALLED, SEE BRANCH
BREAKER TABLE ON THIS DRAWING FOR RESTRICTIONS

BRANCH BREAKER TABLE		
SEE BRANCH BREAKERS FOR BRANCH WIRE RATINGS		
CIRCUIT BREAKER LOAD CONDUCTORS	MAX WIRE (AWG/kcmil)	MAX CIRCUIT BREAKER
LEFT SIDE WITHOUT TUNNEL	300 CU/AL	200A
LEFT SIDE WITH TUNNEL	#2 CU #2 AL	110A 90A
RIGHT SIDE	#2 CU #2 AL	110A 90A

KNOCKOUTS		
SYMBOL	CONDUIT SIZE	
	IN	MM
A	.50	13
B	.75	19
C	1.00	25
D	1.25	32
E	1.50	38
F	2.00	51
G	2.25	64
H	3.00	76



•  TWO SINGLE POLE, ONE PLUG-ON SPACE TYPE HOMT OR ONE SINGLE POLE TYPE HOM OR HOMP. TWO POLE TYPE HOM, HOMA OR HOMT (15-110A) MAY PLUG ON TWO ADJACENT SPACES. TWO POLE TYPE HOMA ((*)150-200A) MAY PLUG ON FOUR ADJACENT SPACES. **USE 15-110A AND (*)150-200A BRANCH BREAKERS ONLY.** TOTAL CIRCUIT BREAKER HANDLE RATING NOT TO EXCEED 160A PER BRANCH CIRCUIT CONNECTOR.

A SQUARE D UL LISTED SECONDARY SURGE ARRESTER MAY PLUG ON TWO ADJACENT SPACES.
ORDER CATALOG NO. HOM2175SB

SC2040M200PF

DUAL DIMENSIONS: INCHES
MILLIMETERS

AMPERE RATING	BUS RATING (AMPS)	FACTORY INSTALLED BYPASS TYPE	SHORT CIRCUIT CURRENT RATING	CATALOG NUMBER	SERIES	SPACES	MAXIMUM NUMBER OF SINGLE POLE HOM CIRCUITS	LINE SIDE PHASE & NEUTRAL LUGS (AWG/KCMIL)	LARGE BRANCH NEUTRAL AWG
200	225	NONE	22K	SC2040M200PF	MO1	20	40	#4-250 CU/AL	#14-#4CU #12-#2AL

COMBINATION SERVICE ENTRANCE DEVICES
RING TYPE
RAINPROOF NEMA TYPE 3R ENCLOSURE
SEMIFLUSH ONLY



DWG# PWFDS-SYRS-0233
NO.